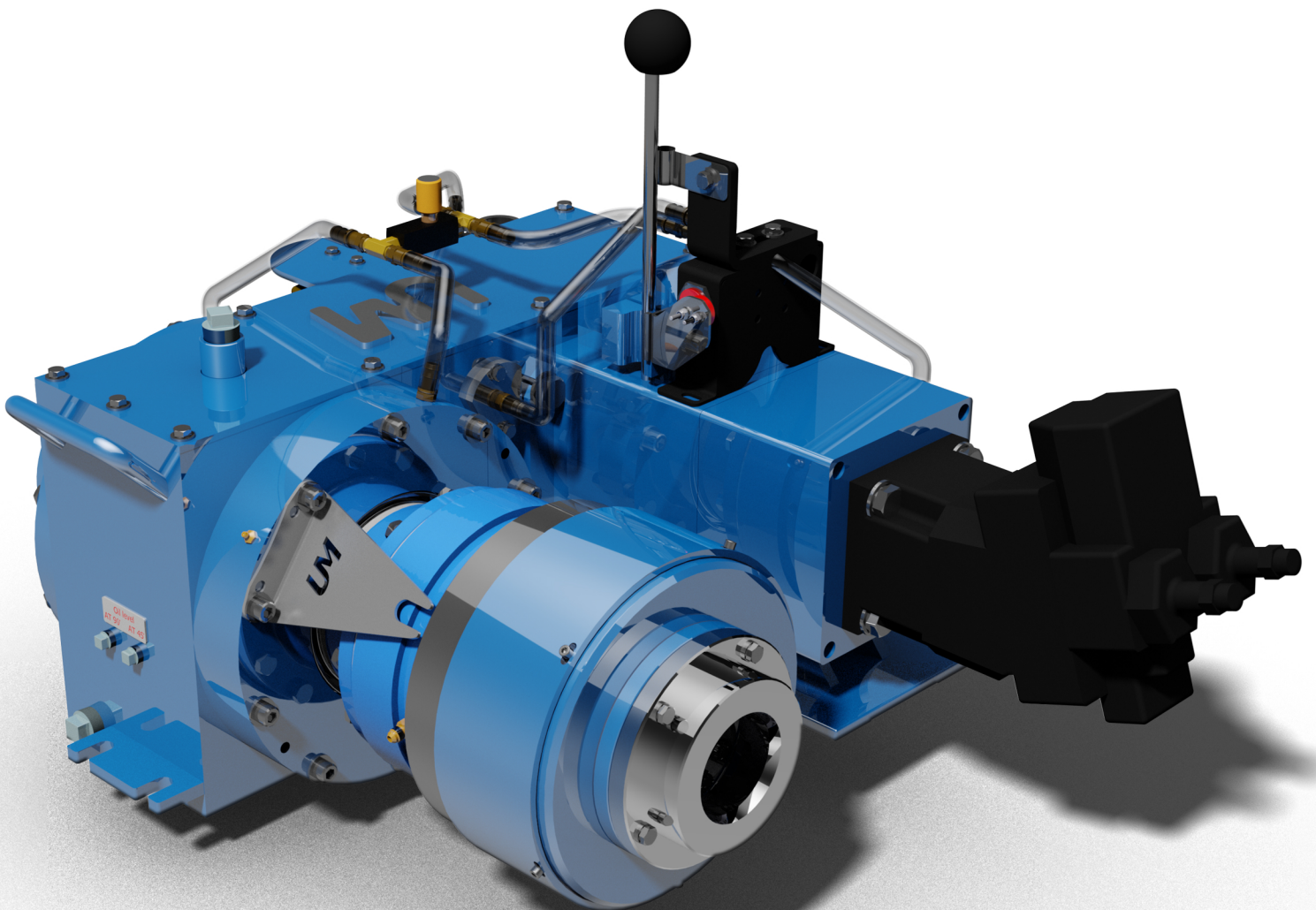


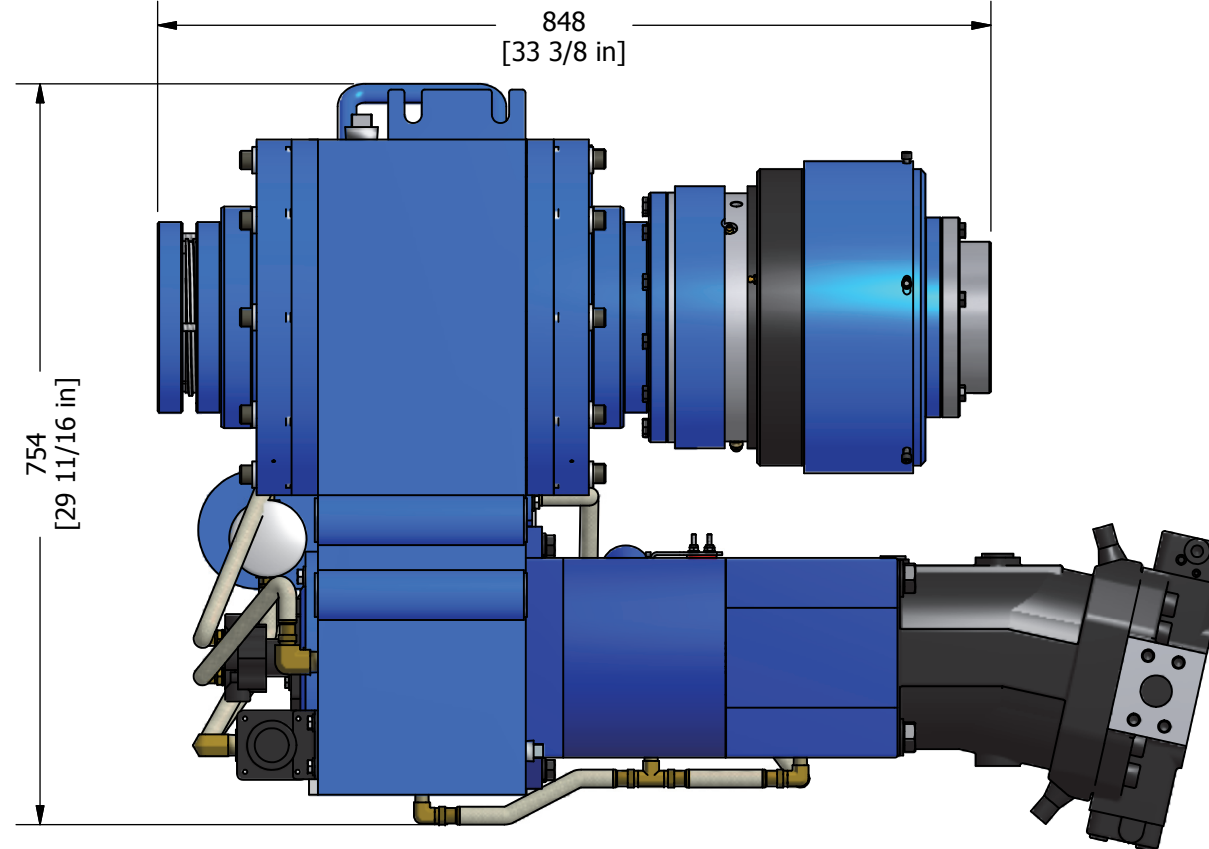
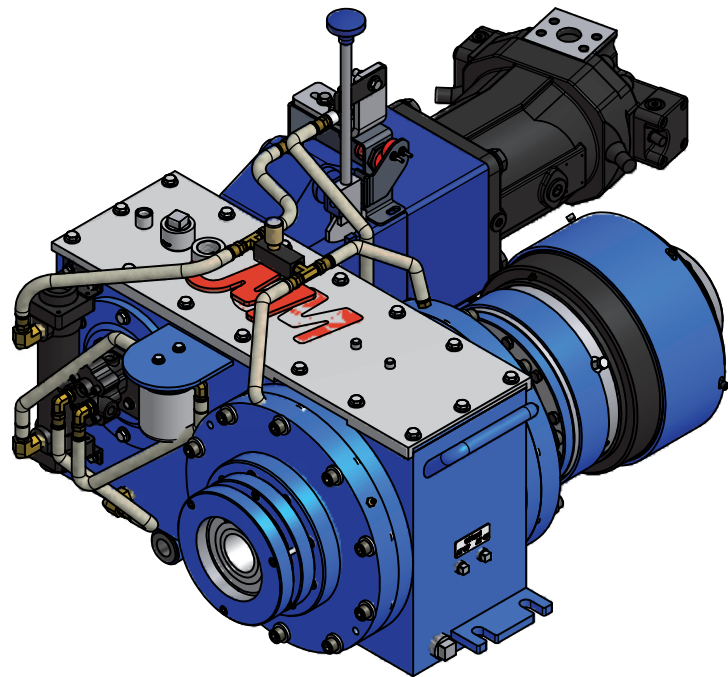
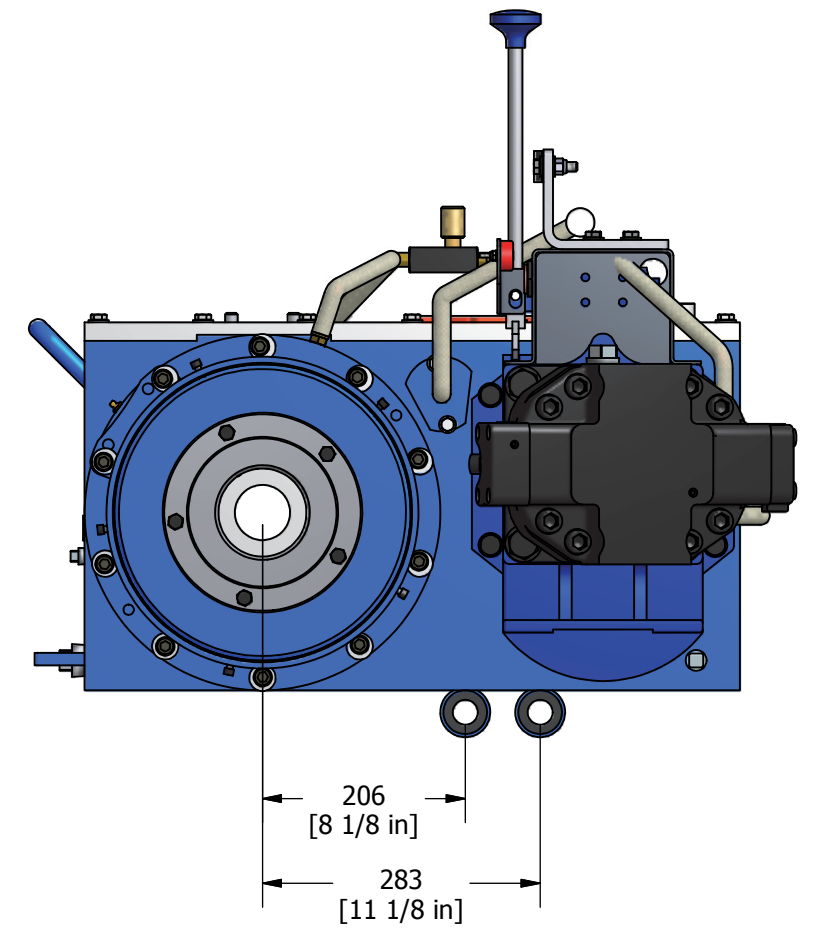
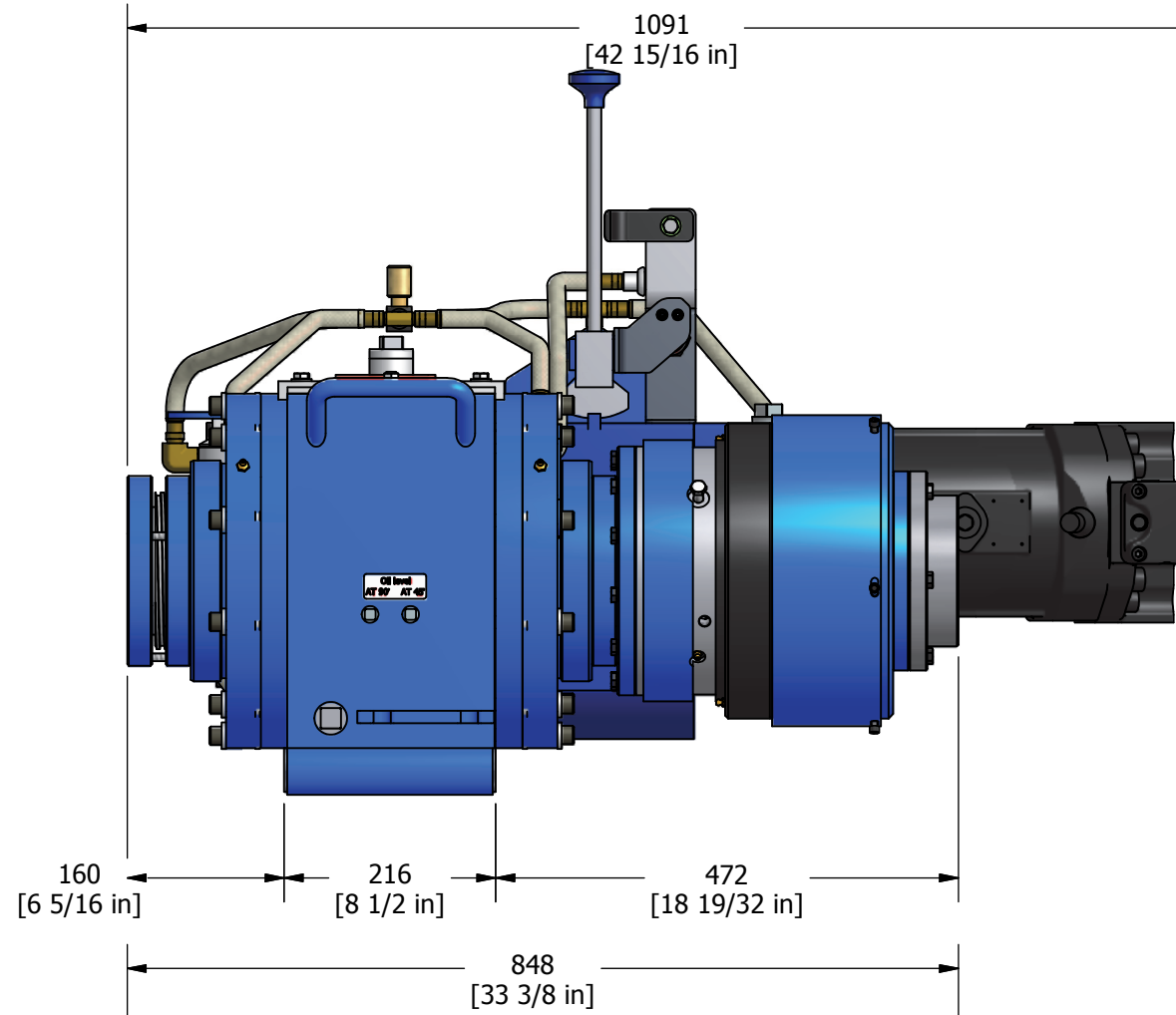
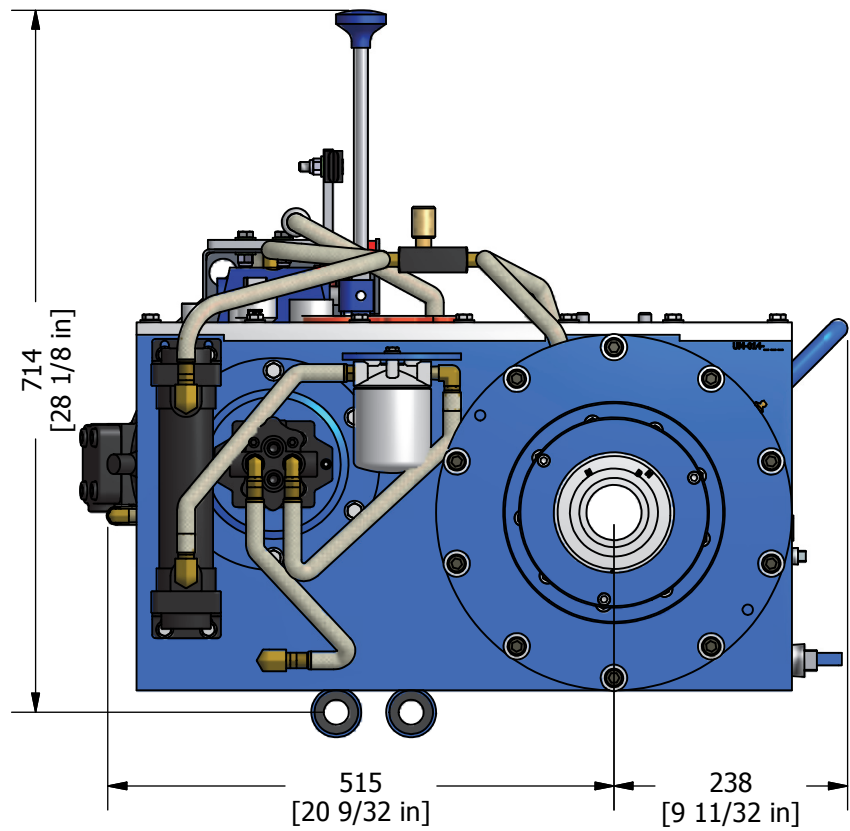


USINAGE
MARCOTTE Inc.

TÊTE DE FOREUSE
DRILLHEAD



WWW.UMVD.CA
UM-014-100-CHRISTENSEN
REV.4



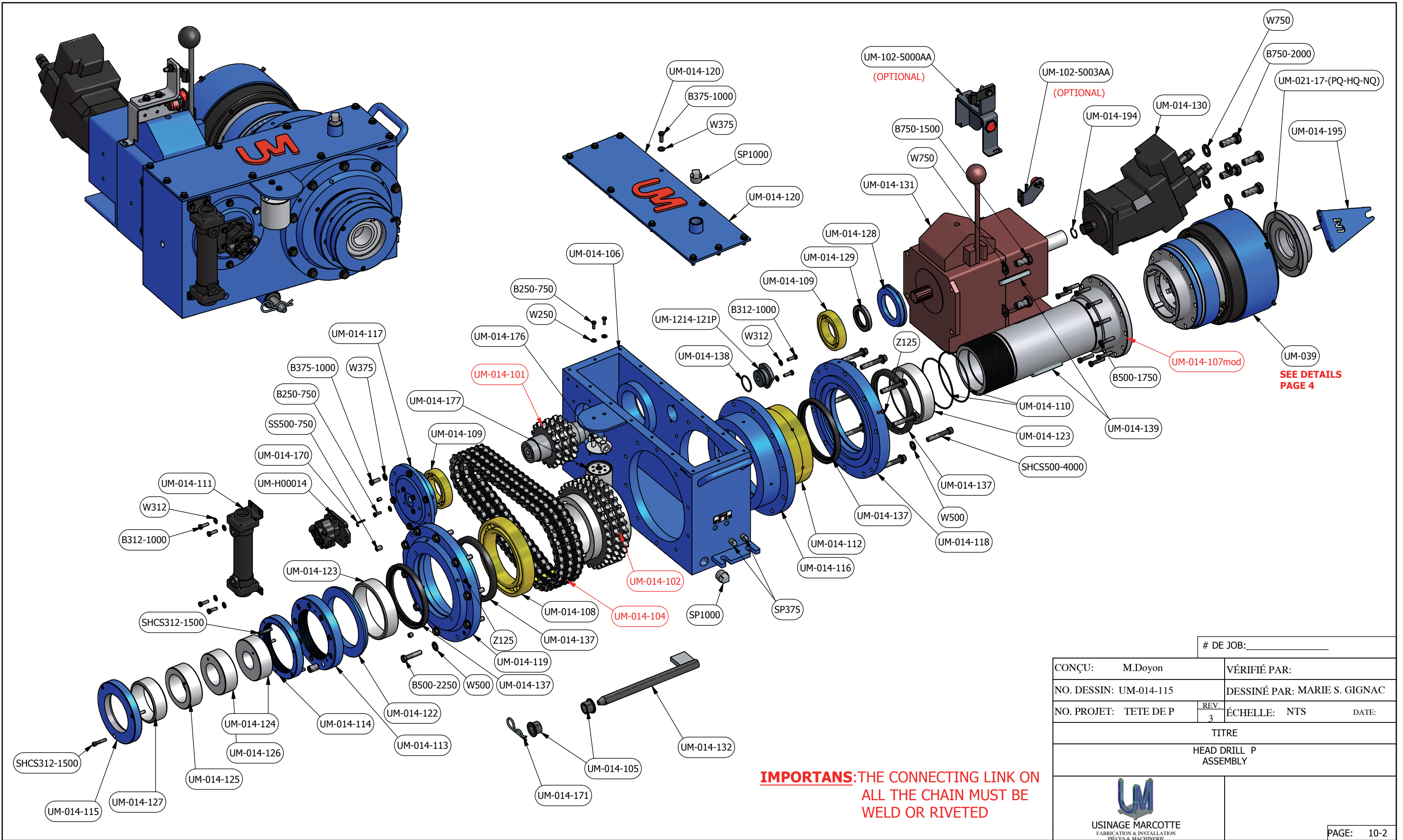
		# DE JOB:	
CONÇU:	MARTIN DOYON	VÉRIFIÉ PAR:	
NO. DESSIN:	UM-014-100 (DIM)	DESSINÉ PAR: MARIE S. GIGNAC	
NO. PROJET:		REV. 3	ÉCHELLE: N.T.S. DATE: 2011-11-17

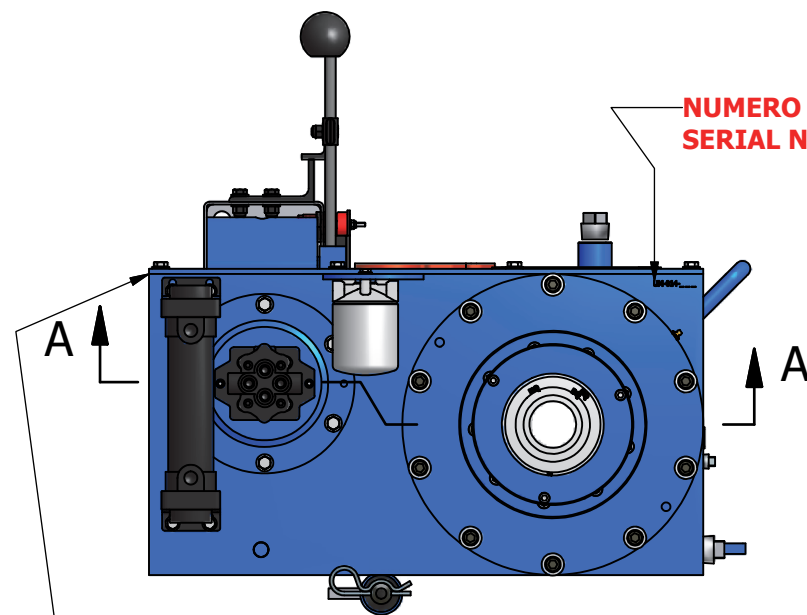
TITRE

OVERALL DIMENSION-DIMENSIONS HORS-TOUT

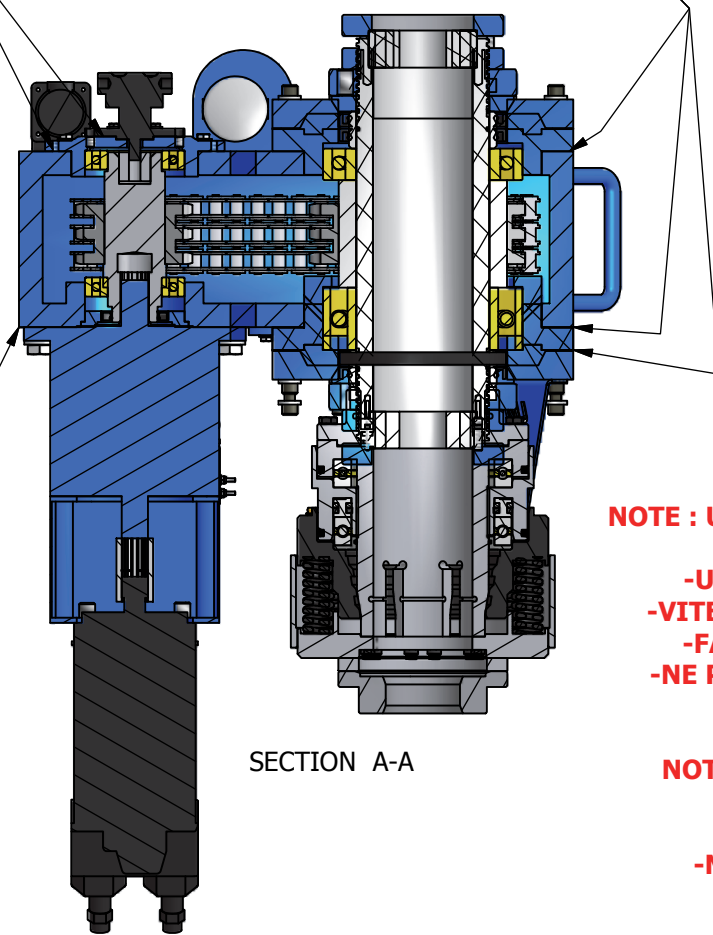



USINAGE MARCOTTE INC.





**UTILISER SILICONE AVANT DE REFERMER
PUT SILICONE BEFORE REINSTALL**



SECTION A-A

**NUMERO DE SERIE
SERIAL NUMBER**

**NOTE : UTILISER UNE CHAINE AU MAILLON RIVETER
OU SOUDER SELEMENT
-UTILISER L'HUILE A ENGRENAGE 80W90
-VITESSE MAX A LA SORTIE SPINDLE 1200RPM
-FAIRE UNE VIDANGE D'HUILE 300 HEURE
-NE PAS SOUDER SUR LA TÊTE LOSQU'ELLE EST
ASSEMBLER**

**NOTE : USE ONLY RIVETED CHAIN AND WELD
CONNECTING LINK
-USE GEAR OIL 80W90
-MAX SPEED OUTPUT SPINDLE 1200RPM
-CHANGE OIL EVERY 300 HOURS
-DON'T WELD ON THIS DRILLHEAD
WHEN IT IS ASSEMBLED**

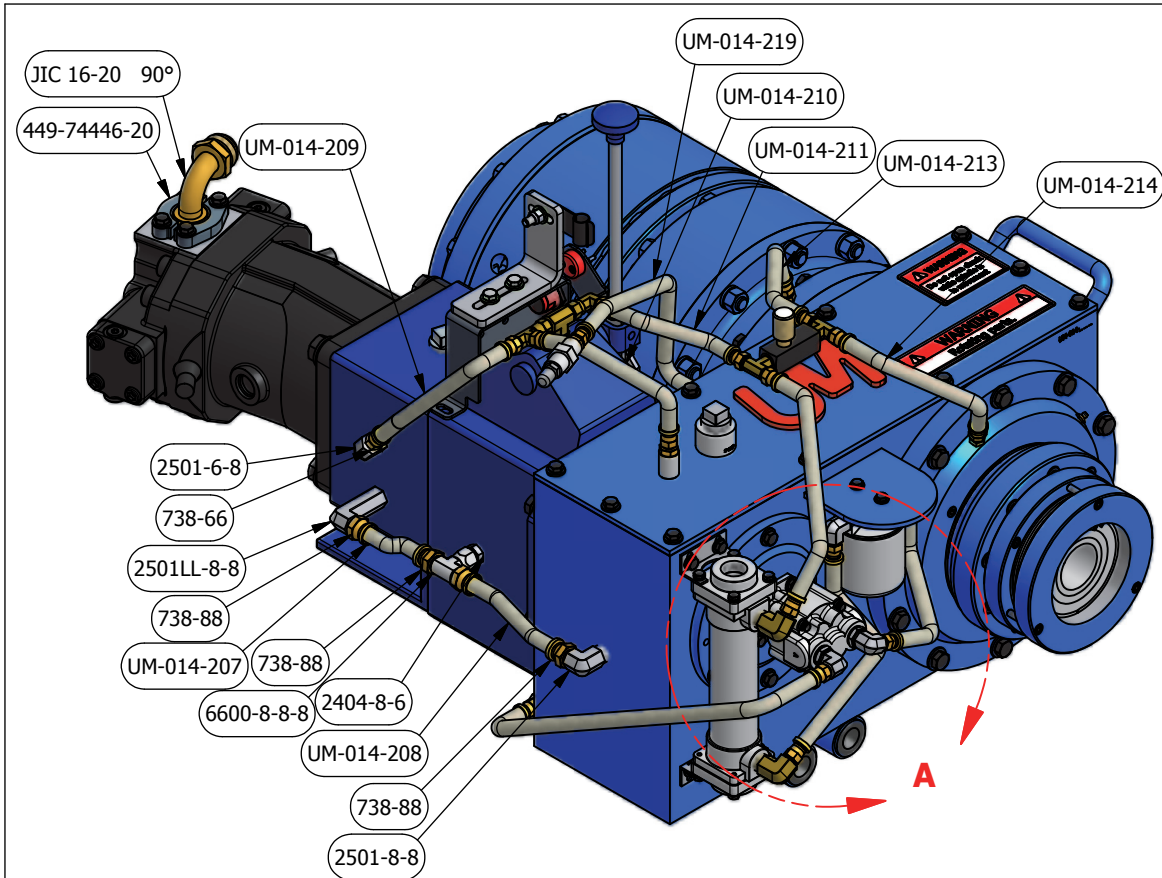
LISTE DE PIÈCE			LISTE DE PIÈCE		
UM-014	NOM/NAME	QTE	UM-014	NOM/NAME	QTE
UM-014-133	BOLT 3/8-16 UNC X 1"	11	UM-014-101	DRIVEN SPROCKET	1
UM-014-135	BOLT 3/8-16 UNC X 1"	6	UM-014-102	DRIVEN SPROCKET	1
UM-014-136	BOLT 1/4-20 UNC X 3/4"	4	UM-014-103	PUMP	1
UM-014-137	SPINDLE SEAL	5	UM-014-104	CHAIN	1
UM-014-138	BLIDDER O-RING	1	UM-014-105	HARDENESS BUSHING	2
UM-014-139	SPINDLE KEY	2	UM-014-106	FRAME	1
UM-014-140	PLUG 1" NPT	2	UM-014-107	SPINDLE DE P	1
UM-014-141	PLUG 3/8" NPT	2	UM-014-108	BEARING SPINDLE SIMPLE	1
UM-014-145	BLIDER	1	UM-014-109	BEARING DRIVEN SHAFT	2
UM-014-150	REGULATOR	1	UM-014-110	SPINDLE O-RING	2
UM-014-163	ZERK	2	UM-014-111	OIL COOLER	1
UM-014-164	SET SCREW 3/4-10 UNC X 1 1/4"	9	UM-014-112	BEARING SPINDLE DOUBLE	1
UM-014-165	SET SCREW 3/8-16 UNC X 1/2"	2	UM-014-113	TIGHT NUT SPINDLE	1
UM-014-166	SET SCREW 1/2-13 UNC X 1/2"	2	UM-014-114	LOCK NUT SPINDLE	1
UM-014-167	HEX. SOCKET 5/16-18 UNC X 1 1/2"	9	UM-014-115	WEAR SLEEVE COVER	1
UM-014-170	KEY PUMP	1	UM-014-116	COUVERT SPINDLE CÔTÉ TRANSMISSION	1
UM-014-171	COTTERS, HAIRPIN 1 in	1	UM-014-117	COUVERT DE POMPE	1
UM-014-172	TENSION WASHER 1/4"	6	UM-014-118	COUVERT ADAPTEUR CHUCK	1
UM-014-173	TENSION WASHER 3/8"	16	UM-014-119	COUVERT SPINDLE CÔTÉ POMPE	1
UM-014-174	TENSION WASHER 5/16"	6	UM-014-120	MAIN COVER	1
UM-014-175	BOLT 5/16-18 UNC X1/2"	4	UM-1214-121P	BLIDDER COVER	1
UM-014-176	HEAD FILTRE	1	UM-014-122	SIT SCREW	1
UM-014-177	FILTRE	1	UM-014-123	SLEEVE	2
UM-014-178	BOLT 1/4-20 UNC X 3/4"	2	UM-014-124	SLEEVE-BQ	1
UM-014-179	STICKER	1	UM-014-125	SLEEVE-HQ	1
UM-014-180	STICKER	1	UM-014-126	SLEEVE-NQ	1
UM-014-181	STICKER	1	UM-014-127	SLEEVE-PQ	1
UM-014-182	BOLT 5/16-18 UNC X 1"	2	UM-014-128	SIT OF SEAL	1
UM-014-183	TENSION WASHER 3/4"	8	UM-014-129	TRANSMISSION SEAL	1
UM-014-184	BOLT 9/16-12 UNC X 1 3/4"	4	UM-014-130	HYDRAULIC MOTOR	1
UM-014-185	BOLT 3/4-10 UNC X 2"	4	UM-014-131	TRANSMISSION	1
UM-014-186	TENSION WASHER 1/2"	50	UM-014-132	SWEVEL PIN	1
UM-014-187	BOLT 1/2-13 UNC X 2"	20			
UM-014-188	HEX SOCKET 1/2-13 UNC X 4"	20			
UM-014-189	PLUG 3/4" NPT	1			
UM-014-190	CHUCK KEY	4			
UM-014-191	CHUCK BOLT	8			
UM-014-193	COPPLING TRANSMISSION - MOTOR	1			
UM-014-194	RETAINING RING INTERNAL 1 1/2"	1			
UM-014-195	CHUCK STOPPER	1			
UM-039	CHUCK CHRISTENSEN "P"	1			
UM-021-17-(HQ-PQ-NQ)	GUIDE BUSHING	1			

DE JOB: _____

CONÇU: M.Doyon	VÉRIFIÉ PAR:	
NO. DESSIN: UM-014-116	DESSINÉ PAR: G.Laroche	2007-12-10
NO. PROJET: TETE DE P	REV. 1	ÉCHELLE: NTS DATE:

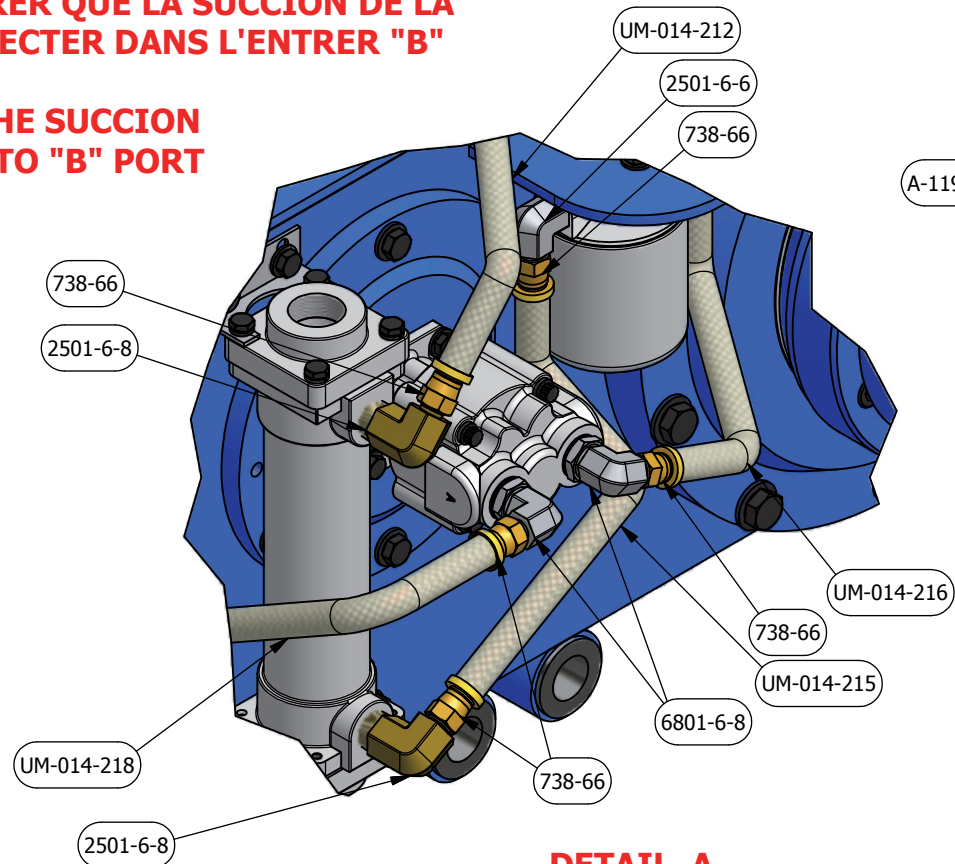
**TITRE
HEAD DRILL P
PART LIST**

USINAGE MARCOTTE
FABRICATION & INSTALLATION
PIÈCES & MACHINERIE

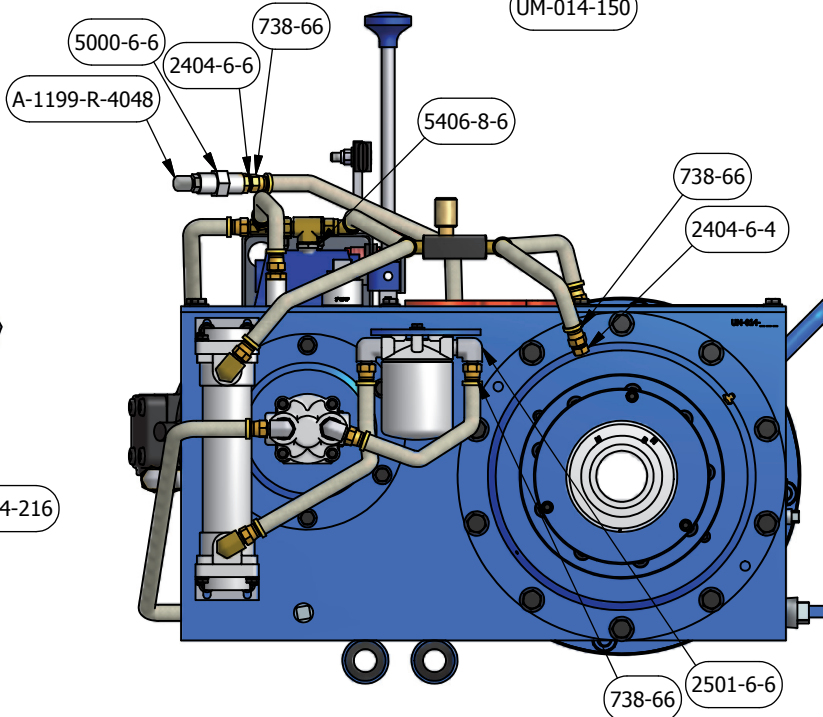
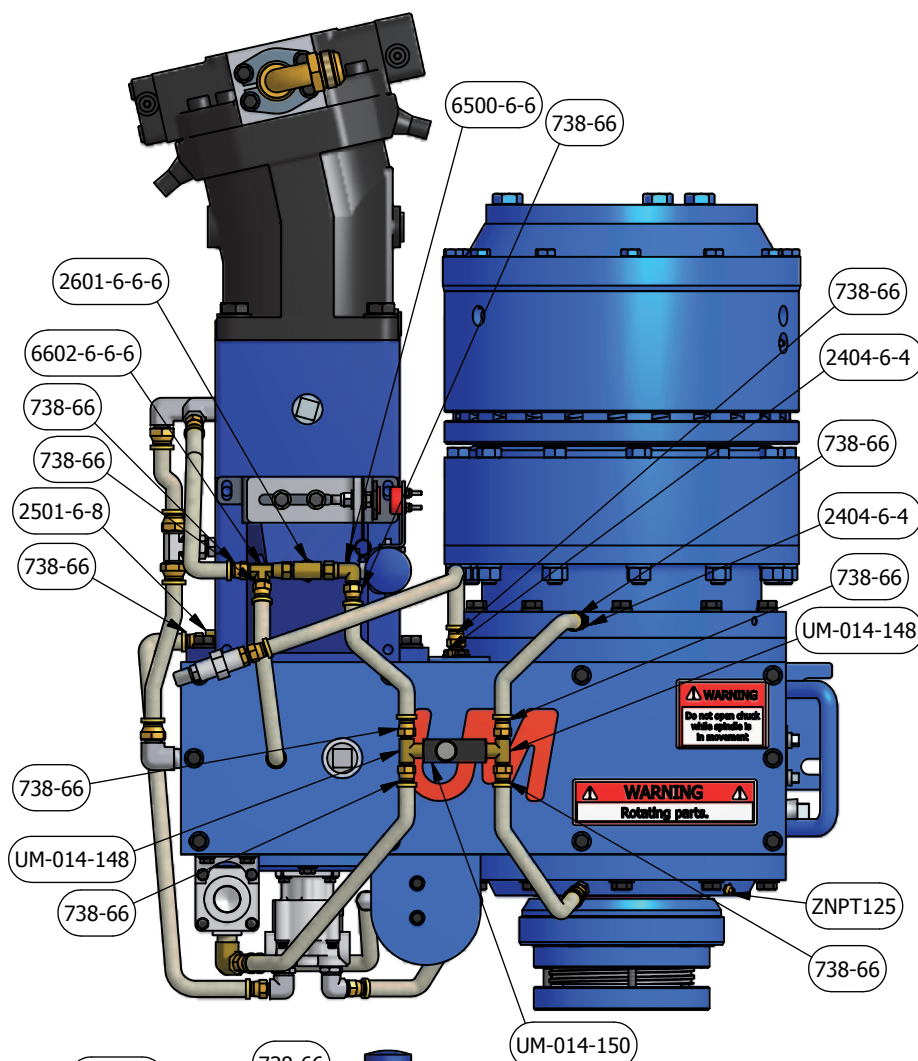


NOTE TOUJOURS S'ASSURER QUE LA SUCCION DE LA POMPE SOIT CONNECTER DANS L'ENTRER "B"

NOTE ALWAYS ENSURE THE SUCCION PUMP IS CONNECT TO "B" PORT



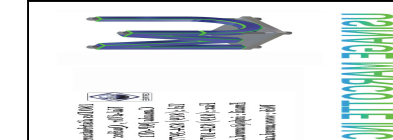
DETAIL A

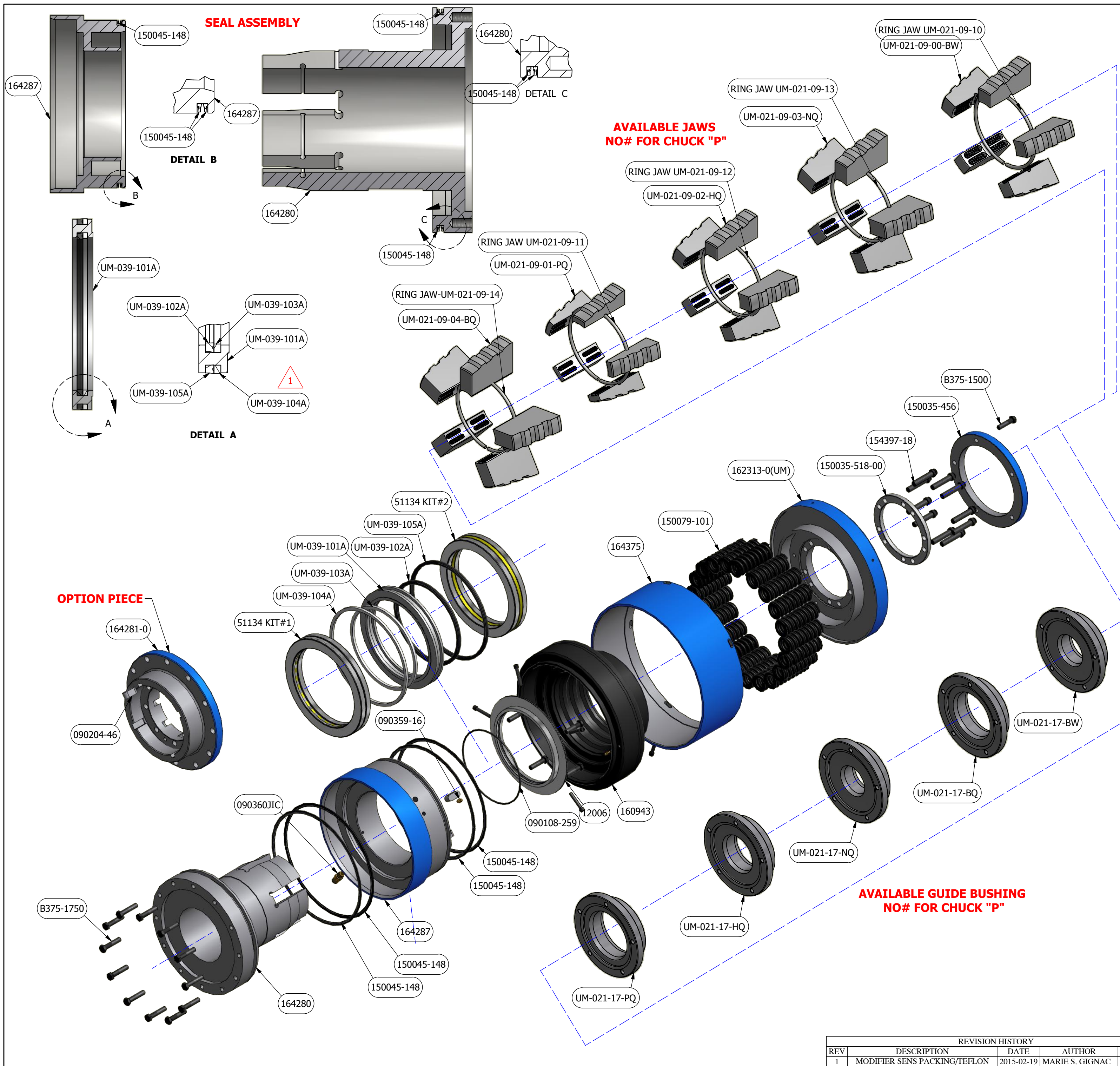


LISTE DE PIÈCE

ITEM	NOM/NAME	QTE
2404-6-4	MJIC 6 x MP 4	3
2404-6-6	MJIC 6 x MP 6	2
2404-8-6	MJIC 8 x NPT 6 90°	1
2501-6-6	MJIC 6 x MP 6 90°	2
2501-6-8	MJIC 6 x MP 8 90°	1
2501-6-8	MJIC 6 x MP 8 90°	3
2501-8-8	MJIC 8 x MP 8 90°	1
2501LL-8-8	MJIC 8 x MP 8 90° XX-LONG	1
2601-6-6-6	MJIC 6 x MJIC 6 x MP 6 TEE	1
449-74446-20	SPLIT FLANGE #20 CODE 62	4
5000-6-6	FP 6 x FP 6 COUPLING	1
5406-8-6	MP 8 x FP 6	1
6500-6-6	MJIC 6 x FJIC 6 SWIVEL 90°	1
6600-8-8-8	MJIC 8 x MJIC 8 x FJIC 8 TEE	1
6602-6-6-6	MJIC 6 x FJIC 6 x MJIC 6 SWIVEL TEE	1
6801-6-8	MJIC 6 x MORB 8 90°	2
738-66	TUBE FITTING	20
738-88	TUBE FITTING	4
A-1199-R-4048	BREATHER	1
JIC 16-20 90°	JIC ELBOW, SPLITFLANGE	2
UM-014-207	HYDRAULIC HOSE 1/2"	1
UM-014-208	HYDRAULIC HOSE 1/2"	1
UM-014-209	HYDRAULIC HOSE 1/2"	1
UM-014-210	HYDROLIC HOSE 1/2"	1
UM-014-211	HYDRAULIC HOSE 1/2"	1
UM-014-212	HYDRAULIC HOSE 1/2"	1
UM-014-213	HYDRAULIC HOSE 1/2"	1
UM-014-214	HYDRAULIC HOSE 1/2"	1
UM-014-215	HYDRAULIC HOSE 1/2"	1
UM-014-216	HYDRAULIC HOSE 1/2"	1
UM-014-218	HYDRAULIC HOSE 1/2"	1
UM-014-219	HYDRAULIC HOSE 1/2"	1
ZNPT125	1/8 NPT ST Zerk	1

DESIGNED BY: M.DOYON	CHECK BY:
# DRAFT: UM-014-100(BOYLE P)	DRAFT BY: M.BERGERON
# PROJECT: UM-014	REV. 0 SCALE: N.T.S. DATE:
TITLE	
DRILLING HEAD FITTING DETAIL	



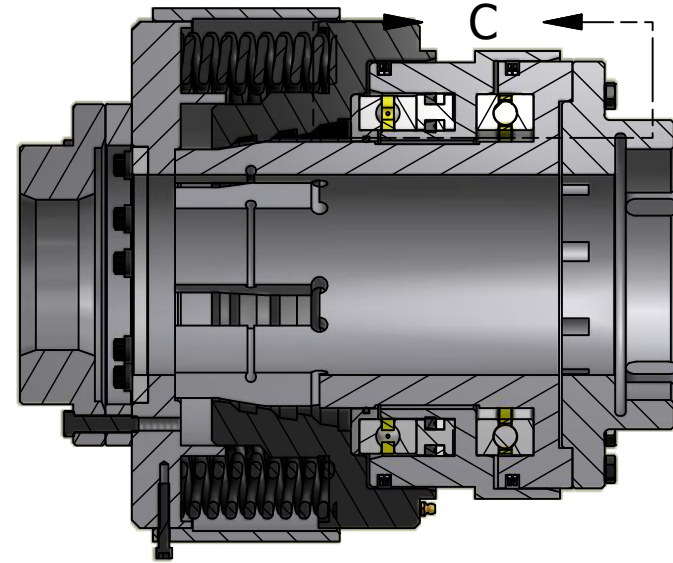
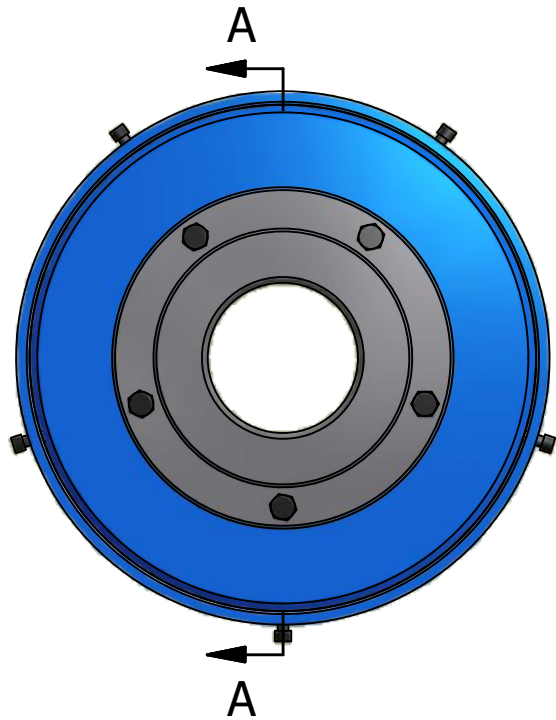


LISTE DE PIÈCE		
ITEM	NOM/NAME	QTE
090108-259	"O"-RING CHUCK CRISTENSEN	1
090204-46	KEY 1/2 X 1 1/4 ROND ENDS	4
090359-16	1/4 UNF ST Zerk	4
090360JIC	HYDRAULIC FITTING	1
12006	RAITENER SEAL	1
150035-456	SPACER CHUCK CRISTENSEN	1
150035-518-00	SHAFT 4140 ANNEALED	1
150045-148	SEAL BRUSH HYD CHUCK	4
150079-101	COMPRESSION SPRING	22
154397-18	BOLT SPECIAL 7/16 - 20 NF 2 in	10
160943	BOWL CHUCK	1
162313-0(UM)	PLATE TOP CHUCK CRISTENSEN	1
164280	BASE CHUCK "P" HEAD	1
164281-0	PLATE ADAPTER	1
164287	CYLINDER CHUCK "P" HE	1
164375	GUARD SPRING CHUCK	1
51134 KIT#1	TRUST BEARING	1
51134 KIT#2	TRUST BEARING	1
B375-1500	BOLT 3/8 -16 NC X 1 1/2	5
B375-1750	BOLT 3/8-16 UNC x 1 3/4	12
SHCS250-1000	SHCS625-1500	5
UM-021-09-00(BW)	SET JAWS CRISTENSEN	1
UM-021-09-02(HQ)	SET JAWS CRISTENSEN	1
UM-021-09-03(NQ)	SET JAWS CRISTENSEN	1
UM-021-09-04(BQ)	SET JAWS CRISTENSEN	1
UM-021-17-(BQ)	GUIDE BUSHING CRISTENSEN	1
UM-021-17-(BW)	GUIDE BUSHING CRISTENSEN	1
UM-021-17-(HQ)	GUIDE BUSHING CRISTENSEN	1
UM-021-17-(NQ)	GUIDE BUSHING CRISTENSEN	1
UM-021-17-(PQ)	GUIDE BUSHING CRISTENSEN	1
UM-21-09-01 (PQ)	SET JAWS CRISTENSEN	1
UM-039-101A	PISTON CHUCK CRISTENSEN	1
UM-039-102A	INSIDE "U"-PACKING	1
UM-039-103A	INSIDE TEFLON BACK-UP	1
UM-039-104A	OUTSIDE TEFLON BACK-UP	1
UM-039-105A	OUTSIDE "U"-PACKING	1

SEAL KIT # UM-039-KPZ CHUCK CRISTENSEN

DESIGNED BY:	CHECK BY:	
# DRAFT: CHUCK CRISTENSEN	DRAFT BY: M.BERGERON	
# PROJECT: UM-039	REV. 0	SCALE: NTS DATE:
TITLE		
CHUCK CRISTENSEN "P"		
USINAGE MARCOTTE		PAGE: 10-5

REVISION HISTORY				
REV	DESCRIPTION	DATE	AUTHOR	APPROVED
1	MODIFIER SENS PACKING/TEFLON	2015-02-19	MARIE S. GIGNAC	H.M.



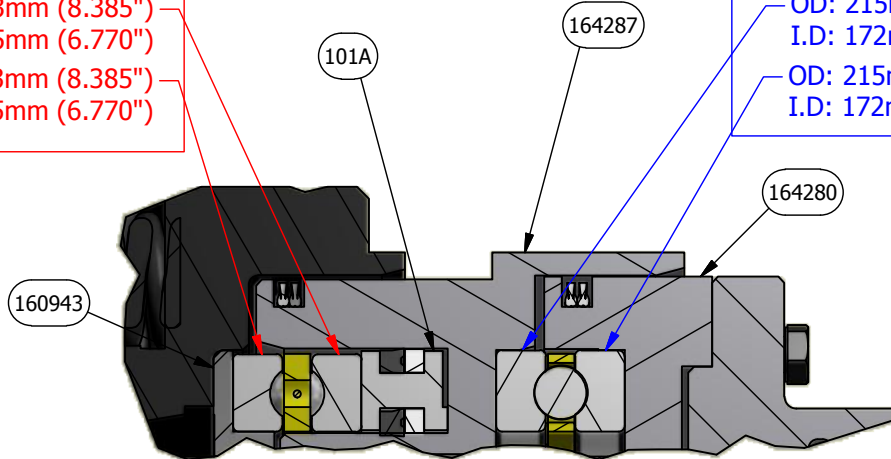
SECTION A-A

51134 KIT #2

51134 KIT #1

OD: 213mm (8.385")
 I.D: 171.95mm (6.770")
 OD: 213mm (8.385")
 I.D: 171.95mm (6.770")

OD: 215mm (8.465")
 I.D: 172mm (6.772")
 OD: 215mm (8.465")
 I.D: 172mm (6.772")



DETAIL C

CHRISTENSEN CHUCK
BEARING KIT # UM-039-09000-2
 (KIT #1, KIT #2, 160943 AND O-RING)

DESIGNED BY:	CHECK BY:		
# DRAFT: Bearing installation	DRAFT BY: G.Laroche		
# PROJECT:	REV. 0	SCALE: N.T.S.	DATE:
TITLE			
BEARING POSITION IN CHUCK			